



# CAD Workflow Editor

---

Craig Huling, System Engineer III

November 2019

# Agenda

- Introduction
  - Macros shortcoming
  - What is workflow foundation
  - Architecture and core concepts
  - Real life examples
- CAD Workflow Editor
- Client Workflows
- Custom UI Workflows
- IFCADDirect Workflows

# Macros

---

# Macros

- Execute multiple tasks with a single command
- Works for command line, right-clicks and buttons
- For example,
  - Logon Unit, Assist Unit, Logoff Unit

# Macros

Create Macro

Macro Name: LOGGED\_OFF\_ASSIST

Macro Scope:  Agency  Common

Command List:

```
LOGON UNIT -U $2
ASSIST UNIT -A $1 -U $2
LOGOFF UNIT -U $2
```

Command Parameters:

| ID  | Description | Required |
|-----|-------------|----------|
| \$1 | UNIT        | No       |
| \$2 | UNIT        | No       |

Set Value

Source Value:  Variable Name  Parameter

Destination:  Variable Name

Dialog

Control ID: Row: Column:

Cancel Macro Execution If Source Blank

Insert Command Into Command List

Buttons: OK, Apply, Reset, Delete, Cancel, Print

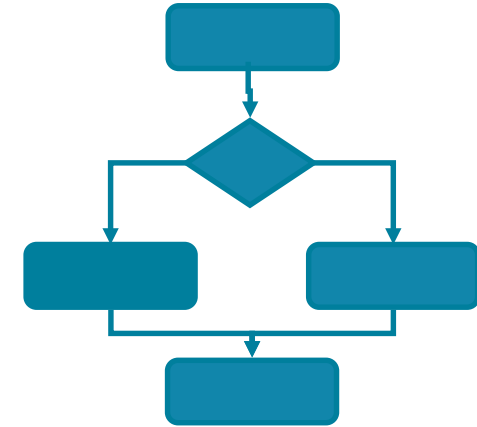
| Position | Configuration Name | Cmdkey | Cmdclass | Params | Keyins                               | description                          |
|----------|--------------------|--------|----------|--------|--------------------------------------|--------------------------------------|
| 1184     | CAD                | EMACRO | 51       | -      | DU -\$1 -\$2 +N<br>LOGGED_OFF_ASSIST | Assist a unit with a logged off unit |

# Workflow Foundation

---

# Workflow Foundation

- What is Workflow Foundation
  - Visualize steps
  - Predefined steps executed
  - A framework for building workflow
  - Built declaratively in xaml that can be executed as code
  - Defined workflows rather than building conventional codes



# Workflow Architecture

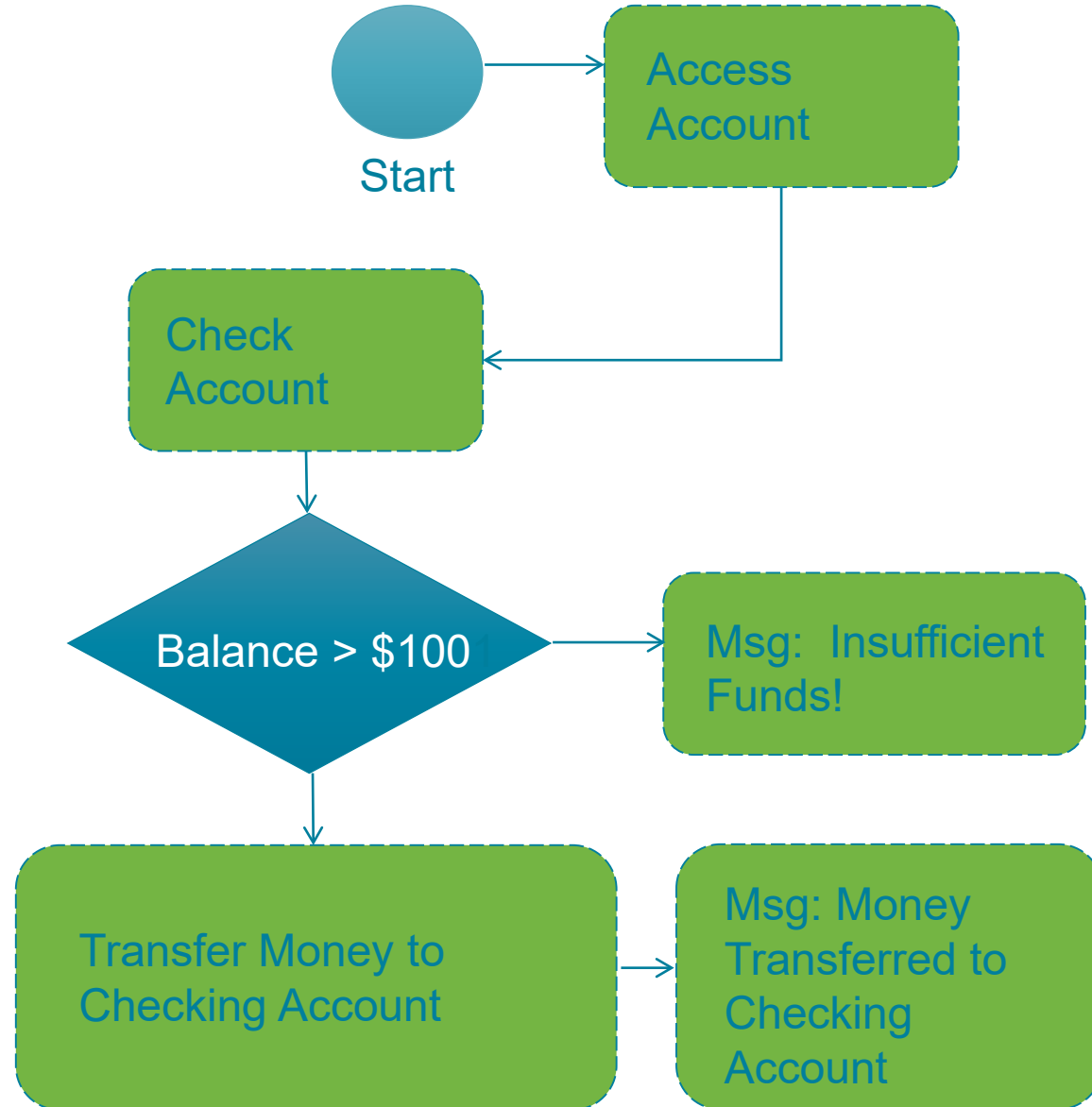
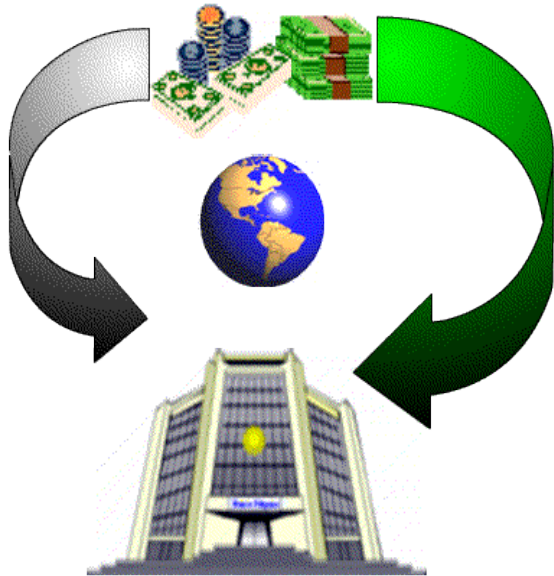
- Architecture & Core
  - Key Concepts
    - Workflows are a set of activities
    - Components created for activities
    - Can have custom activity libraries





# Workflow – Life Example

- BOA –A 555 -AM 100



# Workflow Editor - CADDDBM

- CAD Workflow Editor
  - Introduced in 9.2 MR1
  - Allows flowchart logic with activities used to define actions
  - First used in I/Dispatcher as macro alternative
  - In 9.3 MR1, CWE supports IFCADDirect
  - Now in 9.4, CWE supports building custom UI



| Field Name         | Input Type |
|--------------------|------------|
| Last Name          | Text       |
| First Name         | Text       |
| Id                 | Text       |
| Gender             | Text       |
| Race               | Text       |
| Height             | Text       |
| Weight             | Text       |
| Hair Color         | Text       |
| Eye Color          | Text       |
| Prison             | Text       |
| Incarceration Date | Text       |
| Release Date       | Text       |
| Release Reason     | Text       |

Buttons: Add



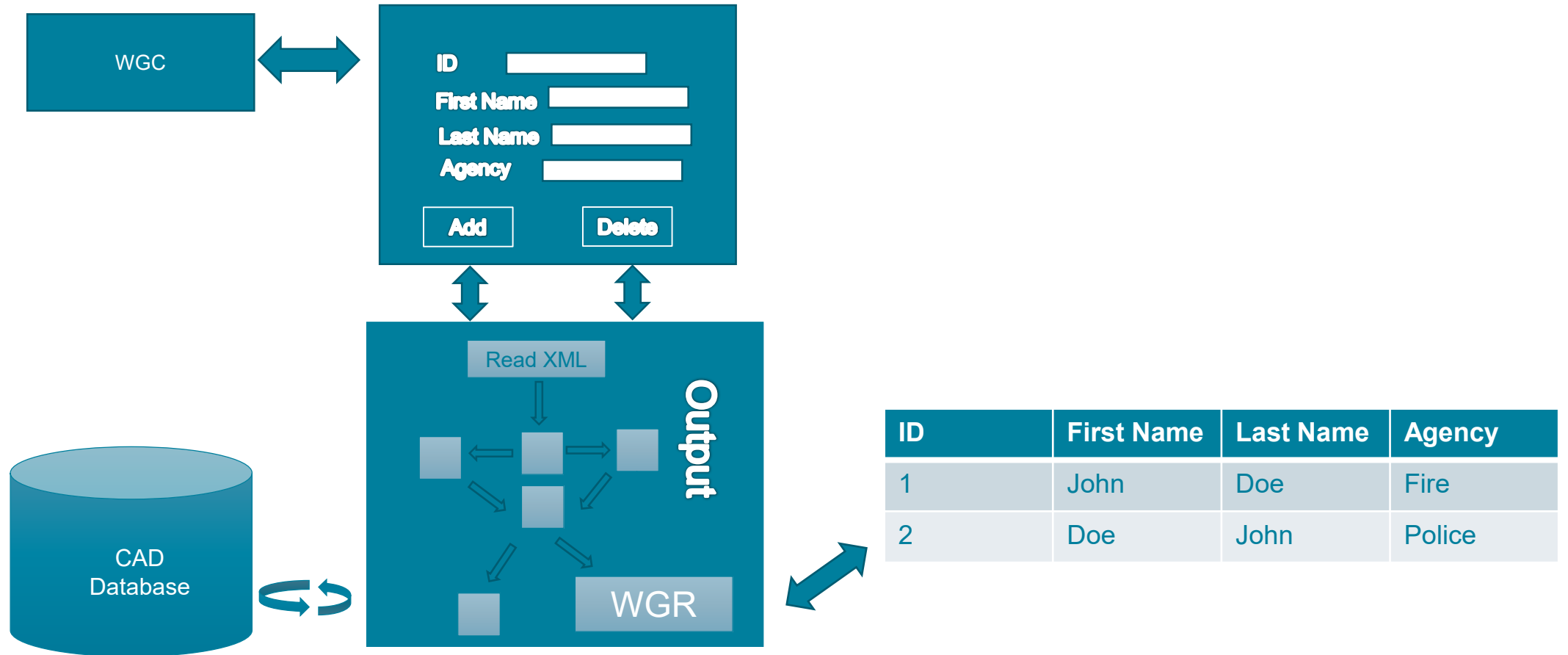
# Client Workflow Demo

---

# Custom UI for Client Workflows Introduction

---

# Architecture for custom UI workflows



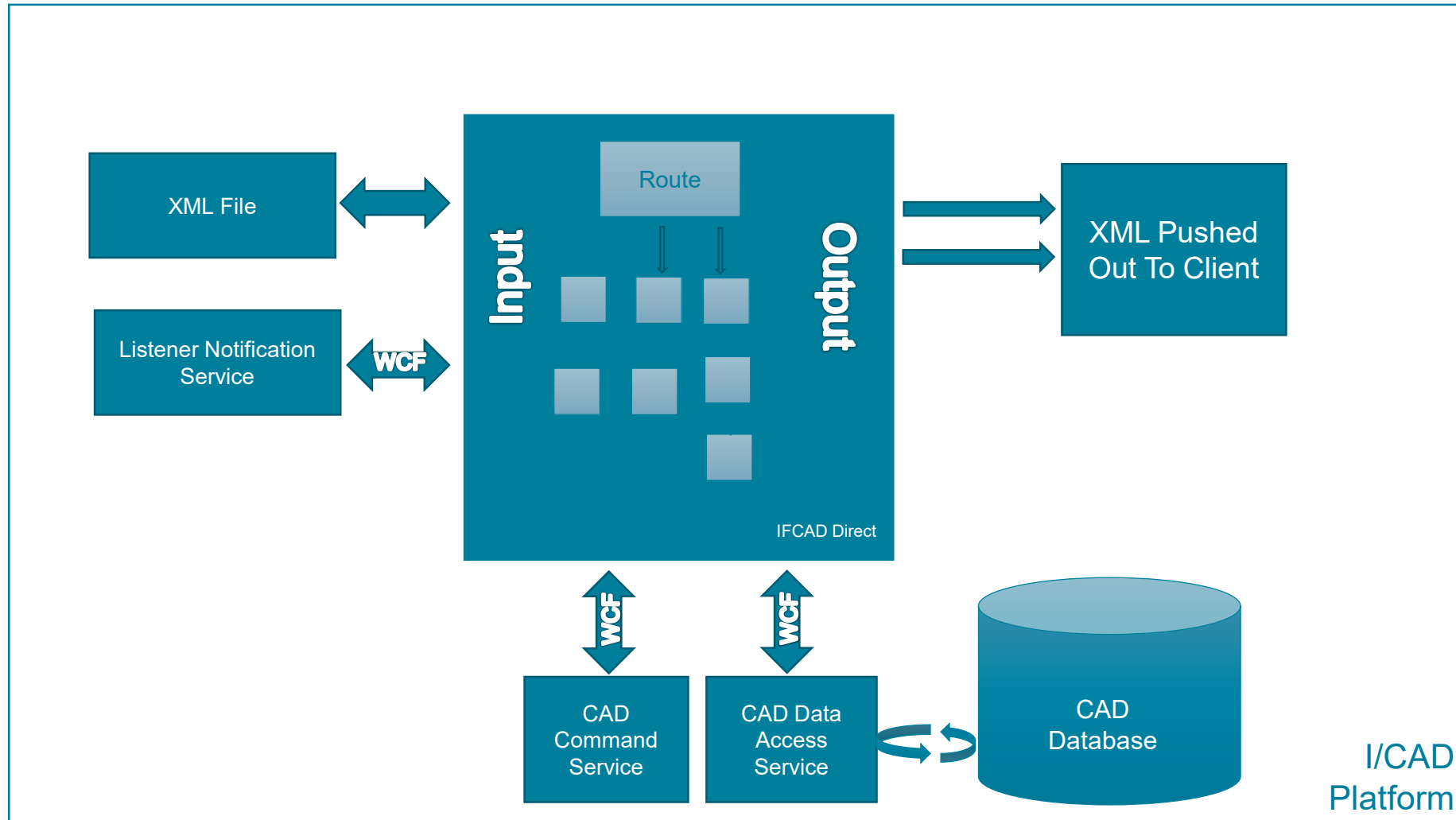
# Custom UI for Client Workflows Demo

---

# IFCADDirect Workflows

---

# Architecture for customer-developed IFCADDirect workflows



I/CAD  
Platform





# IFCADDirect Workflow Demo

---

# Thank You